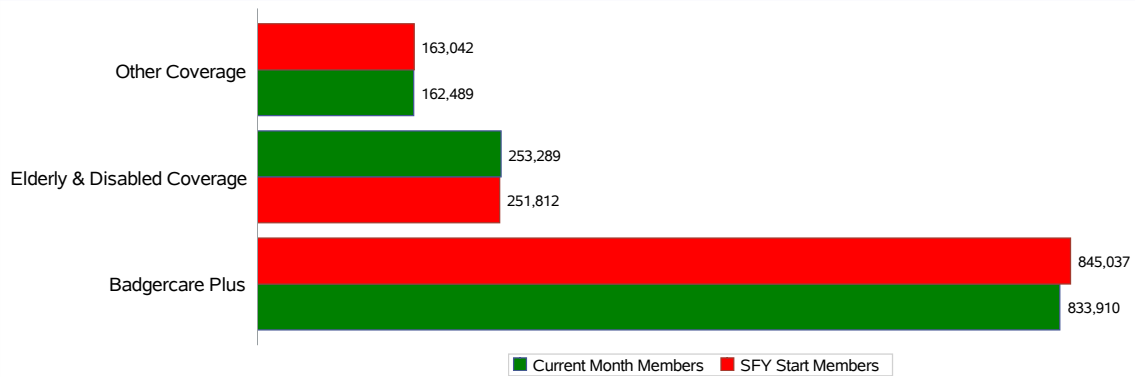


Current Month Health Care Enrollment At A Glance



Mar-26

Category	Current Month Members	% Change since Start of SFY	%Change from Last Month
Childless Adults	193,190	0.4%	-0.1%
Children	465,000	-0.4%	-0.5%
Express Enroll-Children	51	-15.0%	37.8%
Express Enroll-PW	83	59.6%	0.0%
Income Extensions	33,737	-18.9%	-3.0%
Parents/Caretakers	124,339	-1.4%	0.7%
Pregnant Women	16,137	-2.8%	0.3%
Youths Exiting	1,373	2.9%	-0.4%
Badgercare Plus	833,910	-1.3%	-0.3%
Institutionalized	9,756	-0.4%	0.7%
Katie Beckett Program	13,512	16.3%	0.9%
MAPP	33,200	0.9%	0.7%
SSI	111,683	4.4%	-0.1%
SSI-Related	57,269	18.5%	0.5%
Waiver	27,869	-33.9%	0.7%
Elderly & Disabled Coverage	253,289	0.6%	0.3%
Family Planning Only Services	35,204	2.3%	-0.4%
Foster Care	7,477	-3.3%	-0.8%
Medicare Beneficiaries	16,810	1.8%	0.4%
Miscellaneous	3,619	-4.0%	1.4%
SeniorCare	89,139	-1.2%	0.3%
Subsidized Adoption	9,859	-0.9%	0.1%
TB-Related	125	-27.3%	-8.8%
Well Woman MA	256	0.4%	-0.4%
Other Coverage	162,489	-0.3%	0.1%
** Grand Total	1,249,688	-0.8%	-0.1%

Note: HCTC program ended 12/31/2013. BadgerCare Plus Basic ended 03/31/2014.