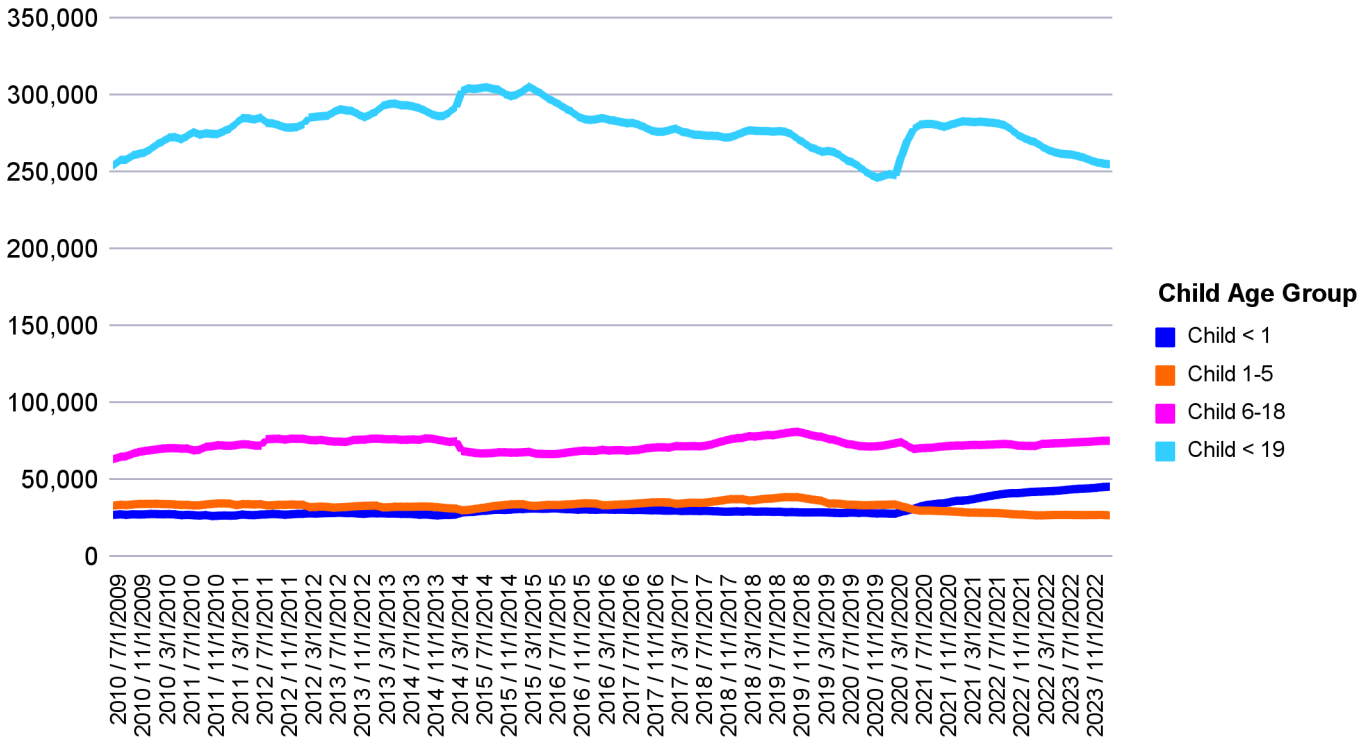


# Children Under 19 in BadgerCare Plus by Age Group



SFY	Month - Year	Child < 1	Child 1-5	Child 6-18	Child < 19	Total
2023	Feb-23	45,535	26,981	75,374	254,976	<b>402,866</b>
	Jan-23	45,337	27,129	75,373	255,550	<b>403,389</b>
	Dec-22	44,878	27,129	75,105	256,235	<b>403,347</b>
	Nov-22	44,523	27,130	74,799	257,484	<b>403,936</b>
	Oct-22	44,337	27,078	74,652	259,147	<b>405,214</b>
	Sep-22	44,109	27,147	74,433	260,224	<b>405,913</b>
	Aug-22	43,876	27,142	74,269	261,263	<b>406,550</b>
	Jul-22	43,458	27,213	74,017	261,555	<b>406,243</b>
2022	Jun-22	43,056	27,197	73,775	261,907	<b>405,935</b>
	May-22	42,763	27,198	73,694	262,946	<b>406,601</b>
	Apr-22	42,576	27,048	73,447	264,329	<b>407,400</b>
	Mar-22	42,390	26,920	73,358	266,544	<b>409,212</b>
	Feb-22	42,253	26,939	72,001	269,253	<b>410,446</b>
	Jan-22	42,054	27,136	72,009	270,444	<b>411,643</b>
	Dec-21	41,665	27,430	72,076	272,121	<b>413,292</b>
	Nov-21	41,326	27,501	72,264	274,226	<b>415,317</b>
Oct-21	41,328	27,764	73,048	277,504	<b>419,644</b>	

## Children Under 19 in BadgerCare Plus by Age Group

<b>SFY</b>	<b>Month - Year</b>	<b>Child &lt; 1</b>	<b>Child 1-5</b>	<b>Child 6-18</b>	<b>Child &lt; 19</b>	<b>Total</b>
2022	Sep-21	40,984	28,142	73,293	280,270	<b>422,689</b>
	Aug-21	40,426	28,369	73,186	281,328	<b>423,309</b>
	Jul-21	39,823	28,491	72,936	281,984	<b>423,234</b>
2021	Jun-21	39,078	28,575	72,822	282,224	<b>422,699</b>
	May-21	38,437	28,640	72,617	282,720	<b>422,414</b>
	Apr-21	37,637	28,715	72,698	282,389	<b>421,439</b>
	Mar-21	36,908	28,678	72,576	282,676	<b>420,838</b>
	Feb-21	36,475	29,066	72,232	282,906	<b>420,679</b>
	Jan-21	36,386	29,274	72,305	281,776	<b>419,741</b>
	Dec-20	35,614	29,538	72,041	280,622	<b>417,815</b>
	Nov-20	34,751	29,685	71,735	279,236	<b>415,407</b>
	Oct-20	34,534	29,790	71,397	280,405	<b>416,126</b>
	Sep-20	34,042	30,004	70,843	281,186	<b>416,075</b>
	Aug-20	33,588	30,053	70,733	281,196	<b>415,570</b>
	Jul-20	32,633	29,967	70,519	280,703	<b>413,822</b>
2020	Jun-20	31,192	30,677	69,981	277,685	<b>409,535</b>
	May-20	30,060	31,810	72,060	270,776	<b>404,706</b>
	Apr-20	29,262	32,805	74,541	260,316	<b>396,924</b>
	Mar-20	27,992	34,033	73,752	247,924	<b>383,701</b>
	Feb-20	28,029	33,907	72,977	248,701	<b>383,614</b>
	Jan-20	28,274	33,800	72,229	247,393	<b>381,696</b>
	Dec-19	28,156	33,768	71,833	246,224	<b>379,981</b>
	Nov-19	28,346	33,574	71,582	248,037	<b>381,539</b>
	Oct-19	28,737	33,463	71,748	250,543	<b>384,491</b>
	Sep-19	28,520	33,580	71,986	253,707	<b>387,793</b>
	Aug-19	28,765	33,877	72,876	256,232	<b>391,750</b>
	Jul-19	28,573	33,877	73,325	257,563	<b>393,338</b>
2019	Jun-19	28,386	34,446	74,698	260,646	<b>398,176</b>
	May-19	28,590	34,603	75,975	262,843	<b>402,011</b>
	Apr-19	28,731	34,576	76,531	263,731	<b>403,569</b>
	Mar-19	28,877	36,373	77,968	263,002	<b>406,220</b>
	Feb-19	28,872	36,877	78,264	264,755	<b>408,768</b>
	Jan-19	28,837	37,416	79,288	266,180	<b>411,721</b>

## Children Under 19 in BadgerCare Plus by Age Group

<b>SFY</b>	<b>Month - Year</b>	<b>Child &lt; 1</b>	<b>Child 1-5</b>	<b>Child 6-18</b>	<b>Child &lt; 19</b>	<b>Total</b>
2019	Dec-18	28,815	38,101	80,292	269,063	<b>416,271</b>
	Nov-18	28,937	38,743	81,225	271,378	<b>420,283</b>
	Oct-18	29,073	38,673	80,948	274,407	<b>423,101</b>
	Sep-18	28,972	38,786	80,303	276,123	<b>424,184</b>
	Aug-18	29,330	38,443	79,709	276,569	<b>424,051</b>
	Jul-18	29,199	37,895	78,965	276,198	<b>422,257</b>
2018	Jun-18	29,391	37,761	79,171	276,561	<b>422,884</b>
	May-18	29,366	37,409	78,593	276,588	<b>421,956</b>
	Apr-18	29,287	36,823	78,151	276,767	<b>421,028</b>
	Mar-18	29,548	36,517	78,362	277,070	<b>421,497</b>
	Feb-18	29,339	37,484	77,314	275,711	<b>419,848</b>
	Jan-18	29,517	37,403	77,006	274,055	<b>417,981</b>
	Dec-17	29,341	37,455	76,381	272,626	<b>415,803</b>
	Nov-17	29,274	36,910	75,405	272,319	<b>413,908</b>
	Oct-17	29,518	36,257	74,305	273,365	<b>413,445</b>
	Sep-17	29,641	35,820	73,113	273,502	<b>412,076</b>
	Aug-17	29,902	35,218	72,217	273,561	<b>410,898</b>
	Jul-17	29,731	34,971	71,716	274,101	<b>410,519</b>
2017	Jun-17	29,870	35,135	71,942	274,201	<b>411,148</b>
	May-17	29,895	35,011	71,822	275,480	<b>412,208</b>
	Apr-17	29,734	34,596	71,793	276,111	<b>412,234</b>
	Mar-17	30,129	34,402	71,952	278,249	<b>414,732</b>
	Feb-17	29,953	35,264	70,922	277,177	<b>413,316</b>
	Jan-17	30,015	35,428	71,128	276,122	<b>412,693</b>
	Dec-16	30,284	35,384	71,143	276,080	<b>412,891</b>
	Nov-16	30,184	35,330	70,790	276,864	<b>413,168</b>
	Oct-16	30,344	34,929	70,410	278,914	<b>414,597</b>
	Sep-16	30,493	34,710	69,480	280,577	<b>415,260</b>
	Aug-16	30,392	34,408	69,201	281,881	<b>415,882</b>
	Jul-16	30,548	34,061	68,923	281,690	<b>415,222</b>
2016	Jun-16	30,672	34,025	69,319	282,481	<b>416,497</b>
	May-16	30,585	33,782	69,248	283,334	<b>416,949</b>
	Apr-16	30,695	33,514	69,011	283,879	<b>417,099</b>

## Children Under 19 in BadgerCare Plus by Age Group

<b>SFY</b>	<b>Month - Year</b>	<b>Child &lt; 1</b>	<b>Child 1-5</b>	<b>Child 6-18</b>	<b>Child &lt; 19</b>	<b>Total</b>
2016	Mar-16	30,795	33,516	69,534	285,100	<b>418,945</b>
	Feb-16	30,550	34,524	68,834	284,255	<b>418,163</b>
	Jan-16	30,655	34,716	68,749	283,771	<b>417,891</b>
	Dec-15	30,872	34,768	68,997	284,306	<b>418,943</b>
	Nov-15	30,566	34,460	68,581	286,027	<b>419,634</b>
	Oct-15	30,924	34,092	68,168	289,128	<b>422,312</b>
	Sep-15	30,944	33,993	67,604	291,088	<b>423,629</b>
	Aug-15	31,275	33,642	67,015	293,705	<b>425,637</b>
	Jul-15	31,524	33,677	66,705	295,906	<b>427,812</b>
2015	Jun-15	31,228	33,667	66,771	297,887	<b>429,553</b>
	May-15	31,202	33,357	66,861	300,922	<b>432,342</b>
	Apr-15	31,362	33,016	67,000	302,974	<b>434,352</b>
	Mar-15	31,316	33,245	68,224	305,558	<b>438,343</b>
	Feb-15	31,051	34,168	67,886	302,629	<b>435,734</b>
	Jan-15	31,069	34,119	67,721	300,284	<b>433,193</b>
	Dec-14	30,707	34,061	67,694	299,176	<b>431,638</b>
	Nov-14	30,393	33,658	67,861	300,716	<b>432,628</b>
	Oct-14	30,631	33,234	67,911	303,522	<b>435,298</b>
	Sep-14	30,389	32,890	67,392	303,999	<b>434,670</b>
	Aug-14	29,934	32,056	67,246	305,118	<b>434,354</b>
	Jul-14	29,822	31,605	67,125	304,492	<b>433,044</b>
2014	Jun-14	29,191	31,013	67,574	303,884	<b>431,662</b>
	May-14	29,154	30,416	68,140	304,390	<b>432,100</b>
	Apr-14	28,751	30,216	68,757	302,517	<b>430,241</b>
	Mar-14	27,428	31,366	75,056	292,366	<b>426,216</b>
	Feb-14	27,186	31,474	74,560	288,899	<b>422,119</b>
	Jan-14	27,195	31,766	75,282	286,429	<b>420,672</b>
	Dec-13	26,859	32,228	76,040	286,245	<b>421,372</b>
	Nov-13	27,142	32,511	76,748	287,547	<b>423,948</b>
	Oct-13	27,539	32,702	76,958	289,729	<b>426,928</b>
	Sep-13	27,332	32,672	75,933	291,417	<b>427,354</b>
	Aug-13	27,779	32,502	76,249	292,612	<b>429,142</b>
	Jul-13	27,924	32,490	76,076	293,287	<b>429,777</b>

## Children Under 19 in BadgerCare Plus by Age Group

<b>SFY</b>	<b>Month - Year</b>	<b>Child &lt; 1</b>	<b>Child 1-5</b>	<b>Child 6-18</b>	<b>Child &lt; 19</b>	<b>Total</b>
2013	Jun-13	27,871	32,518	75,981	293,323	<b>429,693</b>
	May-13	28,148	32,506	76,424	294,465	<b>431,543</b>
	Apr-13	28,068	32,201	76,293	294,127	<b>430,689</b>
	Mar-13	28,287	32,061	76,555	292,993	<b>429,896</b>
	Feb-13	28,233	33,255	76,804	289,467	<b>427,759</b>
	Jan-13	28,330	33,147	76,658	287,370	<b>425,505</b>
	Dec-12	27,876	33,132	76,092	285,463	<b>422,563</b>
	Nov-12	28,106	32,908	76,062	287,462	<b>424,538</b>
	Oct-12	28,450	32,679	75,727	289,600	<b>426,456</b>
	Sep-12	28,365	32,302	74,545	290,050	<b>425,262</b>
	Aug-12	28,707	32,194	74,836	290,767	<b>426,504</b>
	Jul-12	28,436	31,902	74,843	288,985	<b>424,166</b>
2012	Jun-12	28,424	32,384	75,208	286,539	<b>422,555</b>
	May-12	28,294	32,632	75,964	286,220	<b>423,110</b>
	Apr-12	28,053	32,391	75,662	285,876	<b>421,982</b>
	Mar-12	28,264	32,254	75,843	285,331	<b>421,692</b>
	Feb-12	27,942	33,797	76,654	281,141	<b>419,534</b>
	Jan-12	27,884	33,788	76,676	279,138	<b>417,486</b>
	Dec-11	27,640	34,007	76,761	278,855	<b>417,263</b>
	Nov-11	27,299	33,708	76,109	278,887	<b>416,003</b>
	Oct-11	27,644	33,762	76,698	280,351	<b>418,455</b>
	Sep-11	27,848	33,508	76,590	281,537	<b>419,483</b>
	Aug-11	27,539	33,303	76,387	281,923	<b>419,152</b>
	Jul-11	27,434	34,222	72,213	285,361	<b>419,230</b>
2011	Jun-11	27,040	34,002	72,296	284,021	<b>417,359</b>
	May-11	27,128	34,171	72,923	284,821	<b>419,043</b>
	Apr-11	27,481	34,213	73,181	285,014	<b>419,889</b>
	Mar-11	26,862	33,532	72,529	281,753	<b>414,676</b>
	Feb-11	26,692	34,556	72,079	278,268	<b>411,595</b>
	Jan-11	26,852	34,651	72,235	276,594	<b>410,332</b>
	Dec-10	26,657	34,679	72,534	274,667	<b>408,537</b>
	Nov-10	26,474	34,315	71,792	274,712	<b>407,293</b>
	Oct-10	27,126	34,000	71,440	275,145	<b>407,711</b>
	Sep-10	26,750	33,449	69,554	274,152	<b>403,905</b>

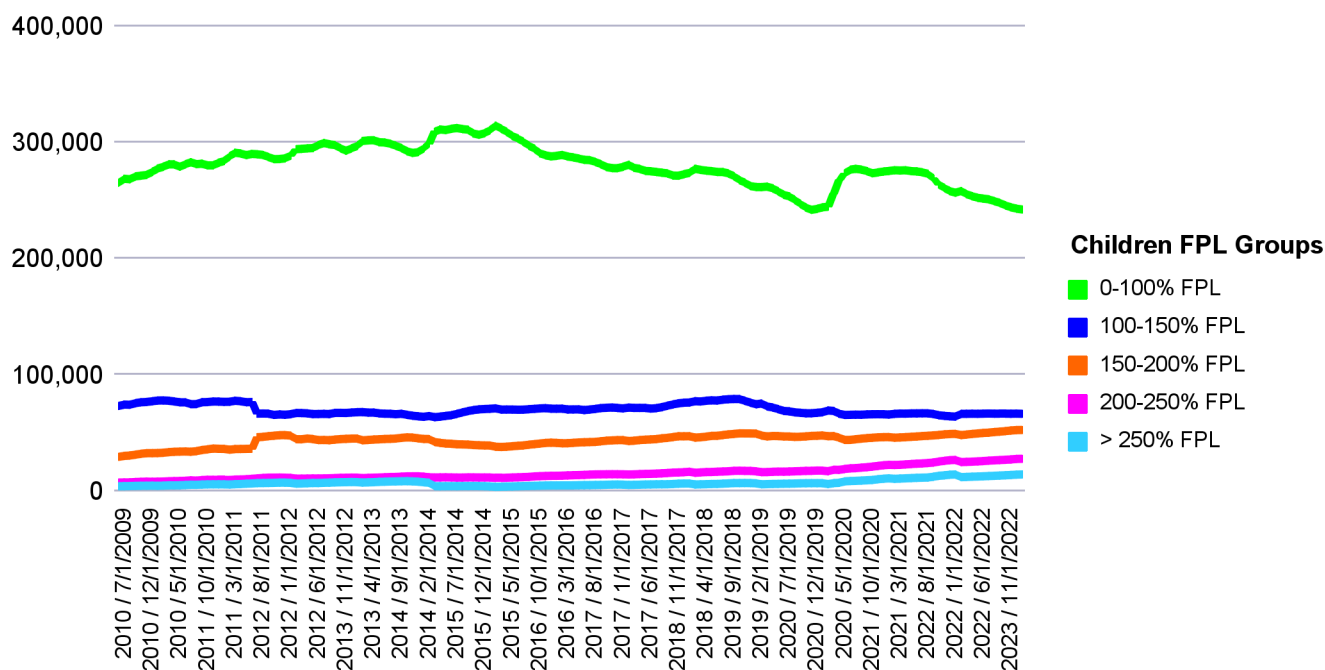
## Children Under 19 in BadgerCare Plus by Age Group

---

<b>SFY</b>	<b>Month - Year</b>	<b>Child &lt; 1</b>	<b>Child 1-5</b>	<b>Child 6-18</b>	<b>Child &lt; 19</b>	<b>Total</b>
2011	Aug-10	27,002	33,348	69,085	275,991	<b>405,426</b>
	Jul-10	27,258	33,730	70,359	273,447	<b>404,794</b>
2010	Jun-10	27,002	33,685	70,267	271,167	<b>402,121</b>
	May-10	27,527	33,946	70,586	272,643	<b>404,702</b>
	Apr-10	27,758	34,221	70,563	272,390	<b>404,932</b>
	Mar-10	27,618	34,265	70,293	269,839	<b>402,015</b>
	Feb-10	27,742	34,457	69,828	267,955	<b>399,982</b>
	Jan-10	27,831	34,372	69,236	264,859	<b>396,298</b>
	Dec-09	27,557	34,362	68,733	262,608	<b>393,260</b>
	Nov-09	27,475	34,336	68,037	261,741	<b>391,589</b>
	Oct-09	27,634	33,970	66,938	260,701	<b>389,243</b>
	Sep-09	27,234	33,573	65,298	257,931	<b>384,036</b>
	Aug-09	27,631	33,783	64,940	257,874	<b>384,228</b>
	Jul-09	27,213	33,270	63,509	254,451	<b>378,443</b>

---

# Children Under 19 in BadgerCare Plus by FPL Group



SFY	Month - Year	0-100% FPL	100-150% FPL	150-200% FPL	200-250% FPL	> 250% FPL	Total	
2023	Feb-23	242,150	66,383	52,472	27,666	14,195	<b>402,866</b>	
	Jan-23	242,887	66,527	52,377	27,563	14,035	<b>403,389</b>	
	Dec-22	244,066	66,440	51,994	27,108	13,739	<b>403,347</b>	
	Nov-22	245,708	66,503	51,453	26,805	13,467	<b>403,936</b>	
	Oct-22	247,862	66,503	51,013	26,583	13,253	<b>405,214</b>	
	Sep-22	249,360	66,483	50,713	26,340	13,017	<b>405,913</b>	
	Aug-22	250,916	66,611	50,153	26,064	12,806	<b>406,550</b>	
	Jul-22	251,554	66,500	49,895	25,694	12,600	<b>406,243</b>	
	2022	Jun-22	252,231	66,377	49,461	25,440	12,426	<b>405,935</b>
		May-22	253,615	66,454	49,076	25,185	12,271	<b>406,601</b>
		Apr-22	255,420	66,366	48,522	25,007	12,085	<b>407,400</b>
		Mar-22	258,136	66,348	48,025	24,838	11,865	<b>409,212</b>
Feb-22		256,534	63,949	49,133	26,663	14,167	<b>410,446</b>	
Jan-22		257,991	64,195	48,994	26,489	13,974	<b>411,643</b>	
Dec-21		260,625	64,619	48,681	25,939	13,428	<b>413,292</b>	
Nov-21		263,739	65,122	48,149	25,282	13,025	<b>415,317</b>	
Oct-21		268,958	66,225	47,792	24,435	12,234	<b>419,644</b>	
Sep-21		272,872	66,781	47,475	24,008	11,553	<b>422,689</b>	
Aug-21		274,211	66,815	47,209	23,654	11,420	<b>423,309</b>	
Jul-21		274,915	66,716	46,856	23,469	11,278	<b>423,234</b>	
2021	Jun-21	275,178	66,719	46,562	23,186	11,054	<b>422,699</b>	

## Children Under 19 in BadgerCare Plus by FPL Group

SFY	Month - Year	0-100% FPL	100-150% FPL	150-200% FPL	200-250% FPL	> 250% FPL	Total
2021	May-21	275,946	66,506	46,296	22,797	10,869	<b>422,414</b>
	Apr-21	275,698	66,570	46,022	22,501	10,648	<b>421,439</b>
	Mar-21	275,962	66,343	45,817	22,307	10,409	<b>420,838</b>
	Feb-21	275,308	65,731	46,345	22,447	10,848	<b>420,679</b>
	Jan-21	274,845	65,972	46,289	22,119	10,516	<b>419,741</b>
	Dec-20	274,072	66,035	46,112	21,543	10,053	<b>417,815</b>
	Nov-20	273,270	65,977	45,778	20,937	9,445	<b>415,407</b>
	Oct-20	275,214	65,860	45,429	20,431	9,192	<b>416,126</b>
	Sep-20	276,512	65,562	44,997	20,076	8,928	<b>416,075</b>
	Aug-20	277,153	65,636	44,485	19,614	8,682	<b>415,570</b>
	Jul-20	276,416	65,512	43,922	19,450	8,522	<b>413,822</b>
2020	Jun-20	273,170	65,363	43,884	18,880	8,238	<b>409,535</b>
	May-20	267,269	66,477	45,838	18,134	6,988	<b>404,706</b>
	Apr-20	255,882	68,828	47,229	18,267	6,718	<b>396,924</b>
	Mar-20	244,576	69,243	47,053	16,935	5,894	<b>383,701</b>
	Feb-20	244,019	67,681	47,752	17,467	6,695	<b>383,614</b>
	Jan-20	242,711	67,242	47,487	17,549	6,707	<b>381,696</b>
	Dec-19	241,791	66,834	47,355	17,299	6,702	<b>379,981</b>
	Nov-19	243,879	66,811	46,938	17,268	6,643	<b>381,539</b>
	Oct-19	246,972	67,247	46,635	17,065	6,572	<b>384,491</b>
	Sep-19	250,438	67,610	46,483	16,885	6,377	<b>387,793</b>
	Aug-19	253,411	68,516	46,837	16,710	6,276	<b>391,750</b>
Jul-19	254,816	68,856	46,868	16,586	6,212	<b>393,338</b>	
2019	Jun-19	257,803	70,410	47,209	16,645	6,109	<b>398,176</b>
	May-19	260,388	71,809	47,301	16,487	6,026	<b>402,011</b>
	Apr-19	261,853	72,731	46,877	16,225	5,883	<b>403,569</b>
	Mar-19	261,407	75,257	47,697	16,165	5,694	<b>406,220</b>
	Feb-19	261,491	74,528	49,353	16,850	6,546	<b>408,768</b>
	Jan-19	262,306	75,963	49,456	17,246	6,750	<b>411,721</b>
	Dec-18	265,184	77,537	49,490	17,259	6,801	<b>416,271</b>
	Nov-18	267,512	79,066	49,552	17,397	6,756	<b>420,283</b>
	Oct-18	270,845	79,096	49,067	17,315	6,778	<b>423,101</b>
	Sep-18	273,227	78,904	48,658	16,903	6,492	<b>424,184</b>
	Aug-18	274,428	78,520	48,088	16,733	6,282	<b>424,051</b>
	Jul-18	274,408	77,798	47,435	16,573	6,043	<b>422,257</b>



## Children Under 19 in BadgerCare Plus by FPL Group

SFY	Month - Year	0-100% FPL	100-150% FPL	150-200% FPL	200-250% FPL	> 250% FPL	Total
2018	Jun-18	275,209	77,941	47,423	16,303	6,008	<b>422,884</b>
	May-18	275,563	77,643	46,693	16,249	5,808	<b>421,956</b>
	Apr-18	276,248	76,932	46,214	15,960	5,674	<b>421,028</b>
	Mar-18	277,176	77,241	45,896	15,612	5,572	<b>421,497</b>
	Feb-18	273,746	76,087	47,084	16,549	6,382	<b>419,848</b>
	Jan-18	272,542	75,925	47,013	16,109	6,392	<b>417,981</b>
	Dec-17	271,235	75,392	47,021	15,911	6,244	<b>415,803</b>
	Nov-17	271,368	74,453	46,348	15,777	5,962	<b>413,908</b>
	Oct-17	273,245	73,324	45,679	15,451	5,746	<b>413,445</b>
	Sep-17	273,840	72,090	45,279	15,138	5,729	<b>412,076</b>
	Aug-17	274,436	71,240	44,618	14,921	5,683	<b>410,898</b>
Jul-17	275,052	70,822	44,318	14,738	5,589	<b>410,519</b>	
2017	Jun-17	275,396	71,433	44,119	14,646	5,554	<b>411,148</b>
	May-17	277,110	71,469	43,765	14,503	5,361	<b>412,208</b>
	Apr-17	278,038	71,424	43,242	14,266	5,264	<b>412,234</b>
	Mar-17	280,699	71,767	42,938	14,171	5,157	<b>414,732</b>
	Feb-17	278,895	70,975	43,735	14,298	5,413	<b>413,316</b>
	Jan-17	277,651	71,426	43,703	14,381	5,532	<b>412,693</b>
	Dec-16	277,742	71,794	43,500	14,399	5,456	<b>412,891</b>
	Nov-16	278,700	71,553	43,255	14,347	5,313	<b>413,168</b>
	Oct-16	281,161	71,280	42,703	14,276	5,177	<b>414,597</b>
	Sep-16	283,091	70,604	42,189	14,247	5,129	<b>415,260</b>
	Aug-16	284,686	70,049	42,044	14,057	5,046	<b>415,882</b>
Jul-16	284,874	69,594	41,909	13,831	5,014	<b>415,222</b>	
2016	Jun-16	285,990	70,182	41,723	13,673	4,929	<b>416,497</b>
	May-16	287,019	70,144	41,417	13,553	4,816	<b>416,949</b>
	Apr-16	287,768	70,105	41,071	13,363	4,792	<b>417,099</b>
	Mar-16	289,174	70,820	40,987	13,161	4,803	<b>418,945</b>
	Feb-16	288,289	70,725	41,373	13,042	4,734	<b>418,163</b>
	Jan-16	287,831	70,772	41,517	13,017	4,754	<b>417,891</b>
	Dec-15	288,791	71,250	41,345	12,868	4,689	<b>418,943</b>
	Nov-15	290,574	71,001	40,765	12,722	4,572	<b>419,634</b>
	Oct-15	294,415	70,661	40,280	12,510	4,446	<b>422,312</b>
	Sep-15	297,096	70,321	39,810	12,101	4,301	<b>423,629</b>
	Aug-15	300,456	69,939	39,143	11,902	4,197	<b>425,637</b>
Jul-15	303,292	69,882	38,848	11,727	4,063	<b>427,812</b>	

## Children Under 19 in BadgerCare Plus by FPL Group

SFY	Month - Year	0-100% FPL	100-150% FPL	150-200% FPL	200-250% FPL	> 250% FPL	Total
2015	Jun-15	305,535	70,039	38,466	11,593	3,920	<b>429,553</b>
	May-15	308,999	70,057	38,059	11,388	3,839	<b>432,342</b>
	Apr-15	311,683	69,979	37,826	11,180	3,684	<b>434,352</b>
	Mar-15	314,475	71,097	38,025	11,180	3,566	<b>438,343</b>
	Feb-15	310,441	70,688	39,099	11,581	3,925	<b>435,734</b>
	Jan-15	307,844	70,510	39,153	11,606	4,080	<b>433,193</b>
	Dec-14	306,373	70,187	39,310	11,582	4,186	<b>431,638</b>
	Nov-14	307,617	69,598	39,533	11,669	4,211	<b>432,628</b>
	Oct-14	310,839	68,716	39,889	11,676	4,178	<b>435,298</b>
	Sep-14	311,369	67,548	40,055	11,524	4,174	<b>434,670</b>
	Aug-14	312,276	66,307	40,156	11,521	4,094	<b>434,354</b>
	Jul-14	311,593	65,135	40,599	11,630	4,087	<b>433,044</b>
2014	Jun-14	310,480	64,584	40,805	11,704	4,089	<b>431,662</b>
	May-14	311,041	63,944	41,395	11,654	4,066	<b>432,100</b>
	Apr-14	309,044	63,448	42,080	11,587	4,082	<b>430,241</b>
	Mar-14	299,114	64,511	44,682	11,729	7,065	<b>427,101</b>
	Feb-14	294,728	63,764	44,747	12,295	7,494	<b>423,028</b>
	Jan-14	291,509	64,214	45,283	12,601	8,003	<b>421,610</b>
	Dec-13	290,802	64,728	45,921	12,567	8,251	<b>422,269</b>
	Nov-13	292,300	65,479	46,099	12,554	8,394	<b>424,826</b>
	Oct-13	295,059	66,430	45,684	12,310	8,345	<b>427,828</b>
	Sep-13	297,003	65,970	45,086	12,030	8,188	<b>428,277</b>
	Aug-13	298,699	66,412	44,827	11,981	8,141	<b>430,060</b>
	Jul-13	299,791	66,451	44,755	11,760	7,946	<b>430,703</b>
2013	Jun-13	300,068	66,734	44,422	11,530	7,839	<b>430,593</b>
	May-13	301,782	67,441	44,250	11,426	7,560	<b>432,459</b>
	Apr-13	301,622	67,404	43,867	11,283	7,403	<b>431,579</b>
	Mar-13	301,099	67,868	43,562	11,030	7,242	<b>430,801</b>
	Feb-13	296,845	67,771	45,065	11,424	7,589	<b>428,694</b>
	Jan-13	294,757	67,447	45,051	11,475	7,715	<b>426,445</b>
	Dec-12	292,689	67,072	44,811	11,333	7,559	<b>423,464</b>
	Nov-12	294,853	67,187	44,610	11,297	7,501	<b>425,448</b>
	Oct-12	297,579	67,165	44,196	11,062	7,352	<b>427,354</b>
	Sep-12	298,274	66,157	43,671	10,877	7,173	<b>426,152</b>
	Aug-12	299,389	66,335	43,847	10,782	7,044	<b>427,397</b>

## Children Under 19 in BadgerCare Plus by FPL Group

<b>SFY</b>	<b>Month - Year</b>	<b>0-100% FPL</b>	<b>100-150% FPL</b>	<b>150-200% FPL</b>	<b>200-250% FPL</b>	<b>&gt; 250% FPL</b>	<b>Total</b>
2013	Jul-12	297,573	66,213	43,767	10,732	6,788	<b>425,073</b>
2012	Jun-12	295,022	66,151	44,664	10,726	6,855	<b>423,418</b>
	May-12	294,745	66,775	45,150	10,656	6,620	<b>423,946</b>
	Apr-12	294,325	67,004	44,421	10,599	6,444	<b>422,793</b>
	Mar-12	294,050	67,090	44,533	10,576	6,257	<b>422,506</b>
	Feb-12	288,570	66,038	47,567	11,246	6,973	<b>420,394</b>
	Jan-12	286,181	65,540	48,056	11,398	7,166	<b>418,341</b>
	Dec-11	285,570	65,859	47,971	11,522	7,173	<b>418,095</b>
	Nov-11	285,471	65,374	47,547	11,433	6,972	<b>416,797</b>
	Oct-11	287,341	66,509	47,090	11,439	6,871	<b>419,250</b>
	Sep-11	289,134	66,625	46,529	11,173	6,792	<b>420,253</b>
	Aug-11	289,662	66,511	46,196	10,805	6,731	<b>419,905</b>
	Jul-11	289,980	76,554	36,309	10,409	6,423	<b>419,675</b>
2011	Jun-11	288,919	76,296	36,219	10,061	6,256	<b>417,751</b>
	May-11	290,334	77,196	36,099	9,868	5,951	<b>419,448</b>
	Apr-11	291,029	77,601	36,056	9,797	5,807	<b>420,290</b>
	Mar-11	287,924	76,755	35,462	9,398	5,515	<b>415,054</b>
	Feb-11	283,935	76,642	36,189	9,528	5,673	<b>411,967</b>
	Jan-11	282,349	76,872	36,261	9,528	5,679	<b>410,689</b>
	Dec-10	280,152	76,963	36,493	9,562	5,709	<b>408,879</b>
	Nov-10	280,122	76,473	35,786	9,608	5,631	<b>407,620</b>
	Oct-10	281,593	76,346	35,211	9,353	5,517	<b>408,020</b>
	Sep-10	281,137	74,713	34,240	8,845	5,270	<b>404,205</b>
	Aug-10	282,904	74,631	33,738	9,128	5,320	<b>405,721</b>
	Jul-10	281,064	76,250	33,957	8,729	5,081	<b>405,081</b>
2010	Jun-10	278,834	76,259	33,831	8,570	4,904	<b>402,398</b>
	May-10	280,985	77,014	33,716	8,461	4,798	<b>404,974</b>
	Apr-10	281,030	77,616	33,386	8,333	4,837	<b>405,202</b>
	Mar-10	278,921	77,885	32,829	8,082	4,559	<b>402,276</b>
	Feb-10	277,352	77,799	32,607	8,020	4,475	<b>400,253</b>
	Jan-10	274,442	77,155	32,517	7,898	4,549	<b>396,561</b>
	Dec-09	271,901	76,551	32,514	8,038	4,517	<b>393,521</b>
	Nov-09	271,253	76,296	31,977	7,862	4,459	<b>391,847</b>
	Oct-09	270,662	75,545	31,229	7,705	4,374	<b>389,515</b>
	Sep-09	268,151	74,129	30,468	7,349	4,217	<b>384,314</b>

## Children Under 19 in BadgerCare Plus by FPL Group

---

<b>SFY</b>	<b>Month - Year</b>	<b>0-100% FPL</b>	<b>100-150% FPL</b>	<b>150-200% FPL</b>	<b>200-250% FPL</b>	<b>&gt; 250% FPL</b>	<b>Total</b>
2010	Aug-09	268,628	74,335	30,151	7,279	4,128	<b>384,521</b>
	Jul-09	265,050	73,090	29,352	7,219	4,040	<b>378,751</b>

---