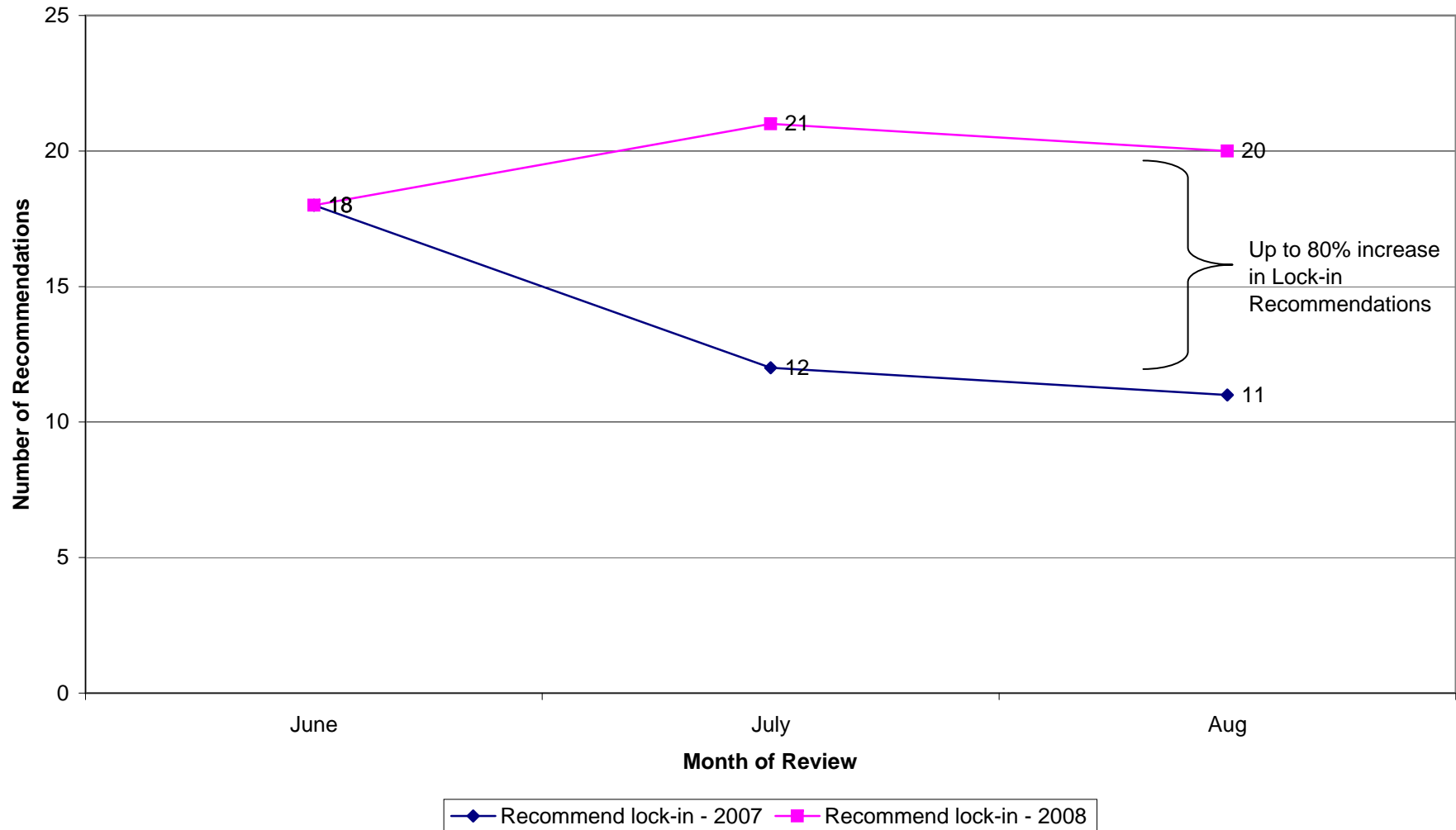
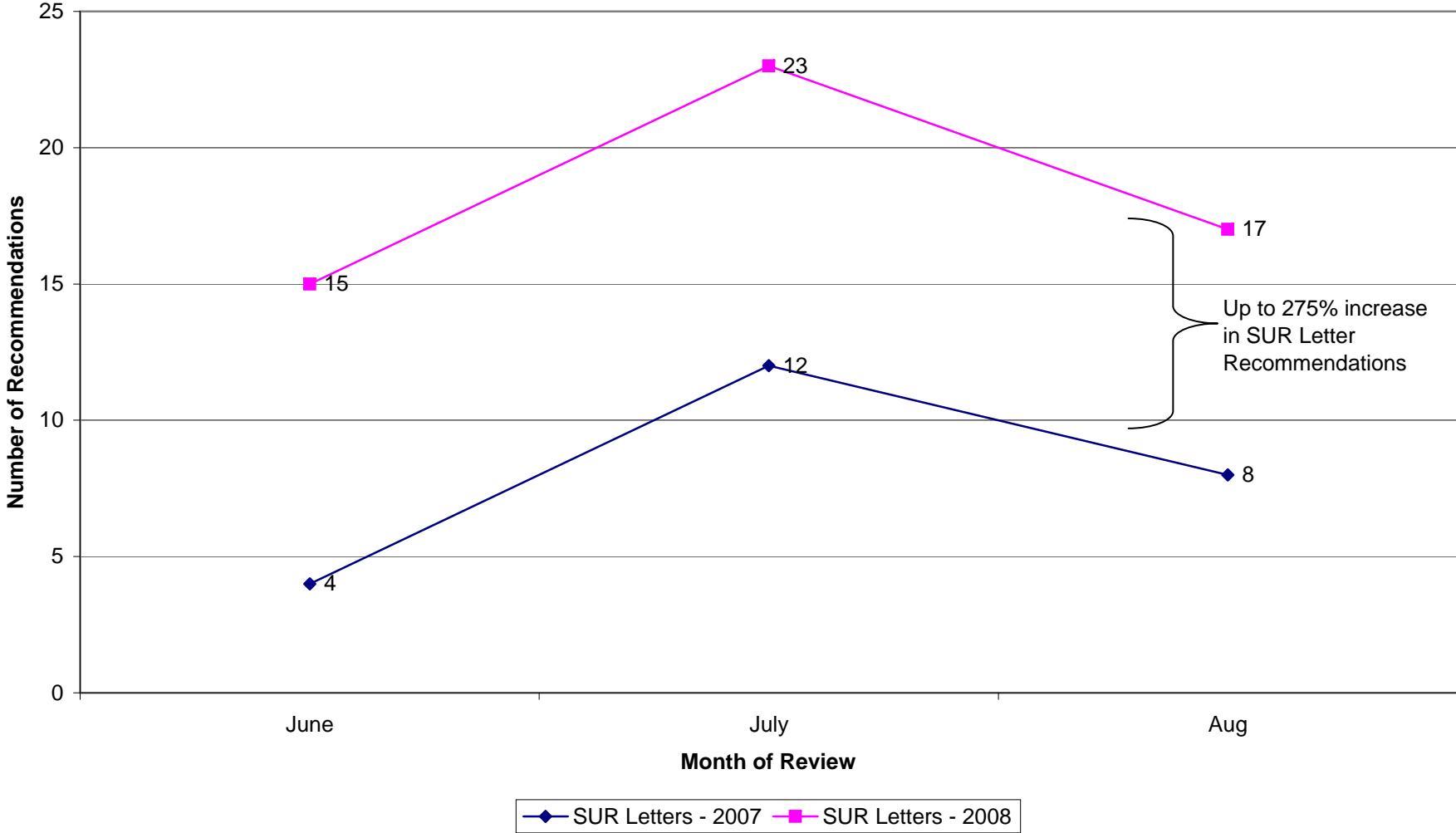


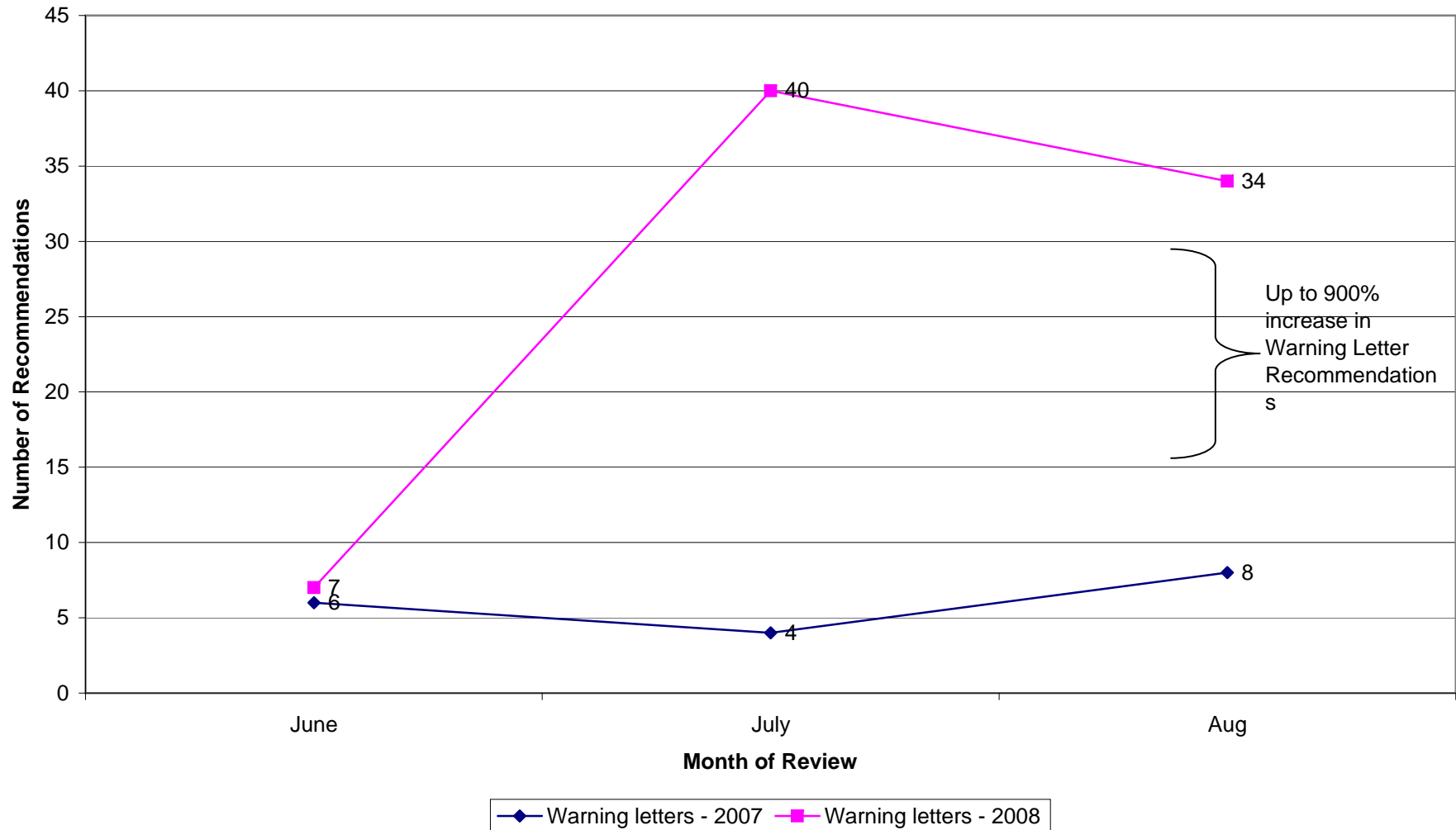
**Attachment 2: Recipient Lock-In - HMO Pharmacy Carve-out
Lock-in Recommendations
Comparison June, July, August of 2007 vs. 2008**



**Recipient Lock-In - HMO Pharmacy Carve-out
SUR Letter Recommendations
Comparison June, July, August of 2007 vs. 2008**



**Recipient Lock-In - HMO Pharmacy Carve-out
Warning Letters Recommendations
Comparison June, July, August of 2007 vs. 2008**



**Recipient Lock-In - HMO Pharmacy Carve-out
Number of Reviews Performed
Comparison June, July, August of 2007 vs. 2008**

