

# OB-PCMH OF ASCENSION COLUMBIA ST. MARY'S FAMILY HEALTH CENTER

MAGGIE SUMINSKI, RN, BSN, CLC



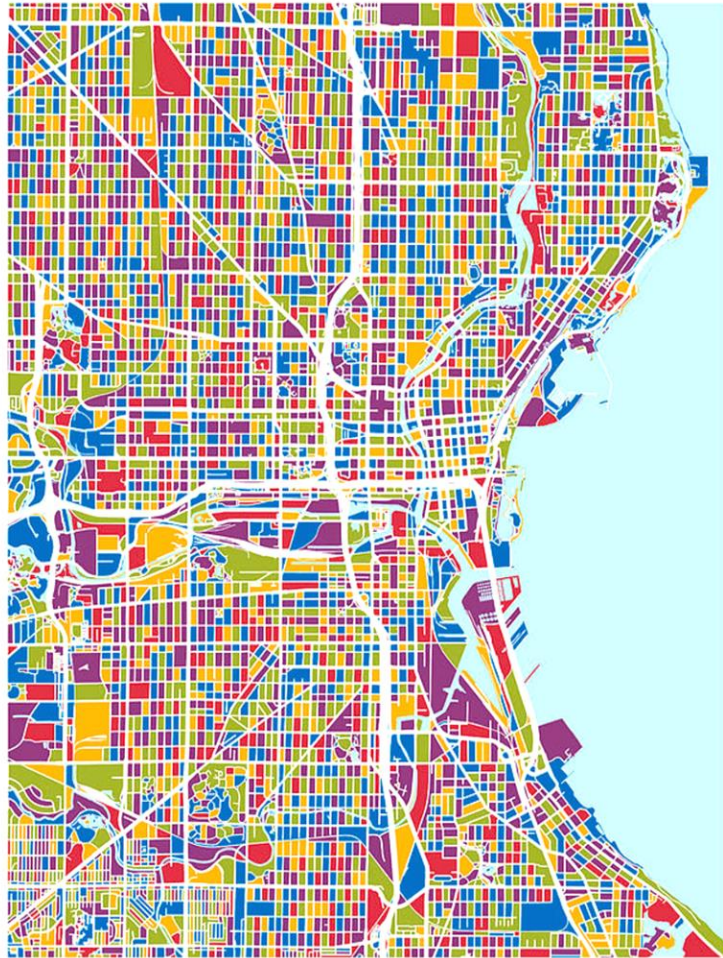
*Family Health Center*



# ABOUT OUR CLINIC

- FAMILY PRACTICE RESIDENCY CLINIC
  - 13 FACULTY PROVIDERS
    - 8 PROVIDE OBSTETRICAL CARE
    - 2 ARE MATERNAL-CHILD HEALTH FELLOWSHIP TRAINED
  - 24 RESIDENTS (8 PER 3 RESIDENCY CLASSES)
    - NUMBER REQUIREMENTS FOR CONTINUITY DELIVERIES
    - OPPORTUNITY FOR MATERNITY TRACK
  - OTHER CARE INTEGRATIONS ON SITE
    - BEHAVIORAL HEALTH
    - SOCIAL WORKER
    - OB NURSE CASE MANAGER
    - MEDICATION ASSISTED TREATMENT PROVIDERS/CLINICS
    - PROCEDURE CLINICS FOR NEXPLANON AND IUD'S
    - BPP'S AND NST'S





MILWAUKEE

# CLINIC DEMOGRAPHICS

## 2020 DEMOGRAPHICS OF ALL DELIVERIES

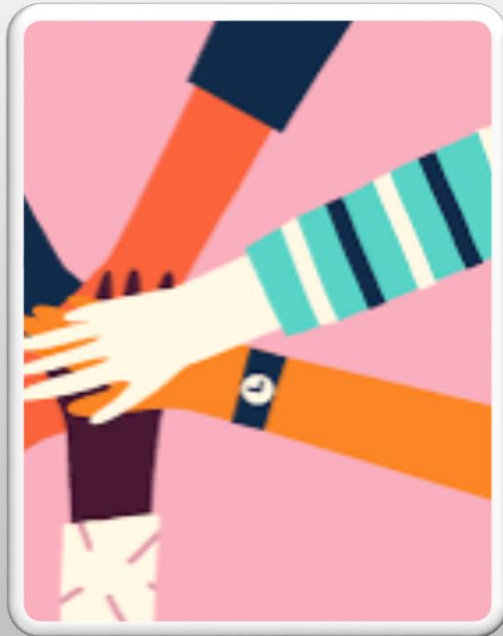
- 121 DELIVERIES
  - DOWN FROM AND 173 IN 2018 AND 154 IN 2019
- 49% RESIDE IN 7 OF THE MOST UNDERSERVED ZIP CODES IN MILWAUKEE
- 10% RESIDE IN OUR HOME NEIGHBORHOOD OF RIVERWEST
- 90% MEDICAID
- 10% COMMERCIAL
- AFRICAN-AMERICAN 87%
- CAUCASIAN 12%
- OTHER 1%
- HISPANIC 7%
- NON-HISPANIC 93%

# HOW I GOT HERE



- 2006: STARTED AT THE FAMILY HEALTH CENTER
  - WORKED IN TRIAGE WITH ALL PATIENTS
  - ASSIGNED AS OB NURSE
- 2012: HIRED BY THE MEDICAL COLLEGE OF WISCONSIN
  - CASE MANAGER
  - LEAD OF OB-PCMH PROGRAM AT FHC

# OUR OB-PCMH TEAM



- 2 MATERNAL CHILD HEALTH FACULTY PHYSICIANS
  - DR. CAMILLE GARRISON AND DR. DANIEL DEMIRCHYAN
- 2 PRENATAL CARE COORDINATORS
  - DESIGNATED OB INTAKE NURSE
  - CLINIC SOCIAL WORKER

# OUR PROCESS

## AT NOTIFICATION OF POSITIVE PREGNANCY TEST:

- OB NURSE CASE MANAGER COMPLETES RISK ASSESSMENT
  - DETERMINES URGENCY OF APPOINTMENT
    - ACUTE CONCERNS, LATE CARE, ANY MEDICAL OR PSYCH-SOCIAL NEEDS
  - CONSULT WITH MCH PROVIDERS AS NEEDED
  - REVIEW OF MEDICATIONS
  - OBTAIN RECORDS FROM CURRENT OR PAST PREGNANCIES FOR CONTINUITY OF CARE
  - DETERMINES ELIGIBILITY OF OB-PCMH
  - INITIATES TRACKING PROCESS

# AT INITIAL APPOINTMENT

- OB NURSE CASE MANAGER OR SOCIAL WORKER MEETS WITH PATIENT
  - OFFERS PNCC IF ELIGIBLE (IN CLINIC OR COMMUNITY-BASED AGENCIES)
  - PROVIDES INITIAL EDUCATION AND RESOURCES
  - REFERS TO THE AFRICAN AMERICAN BREASTFEEDING NETWORK IF INTERESTED
- INITIATES OB-PCMH REQUIREMENTS
  - ENTERS IN OB REGISTRY
  - FAXES NOTIFICATION OF PREGNANCY

# THROUGHOUT THEIR PREGNANCY

- PROVIDE PNCC SERVICES
- CHECK IN OR MEET AS NEEDED WITH PATIENTS WHO HAVE DECLINED PNCC
  - FREQUENT INTERACTIONS WITH PROVIDERS
- COORDINATE CARES
  - MFM CONSULTS, ANTENATAL TESTING, MAKENA HYDROXYPROGESTERONE
- TRACK APPOINTMENTS WEEKLY
  - CALL PATIENTS WHO CANCEL OR NO-SHOW
  - CALL PATIENTS WHO DO NOT HAVE A PENDING APPOINTMENT
  - SEND LETTER AFTER MULTIPLE ATTEMPTS
  - HOME VISIT WITH RN, SW AND/OR PROVIDER DEPENDING ON GESTATIONAL AGE



# AFTER THEIR PREGNANCY

- UPDATES OB REGISTRY
- ENTERS DELIVERY DATA FOR FUTURE CLINIC/BEST PRACTICE USE
- CREATES TICKLER TO CALL AND SCHEDULE FOR PP VISIT
  - TRACKS PP VISIT AND CALLS IF NO-SHOWS OR CANCELS
  - UPDATE REGISTRY WITH PP VISIT INFORMATION

# BONUSES OF OB-PCMH

- MULTIDISCIPLINARY MONTHLY CHART REVIEW
  - MCH PROVIDERS, MATERNITY TRACK RESIDENTS, OB RN CASE MANAGER AND CLINIC SOCIAL WORKER
  - DONE AT 20 AND 32 WEEKS; OR EACH REVIEW IF DEEMED HIGH RISK
  - [OB CHART REVIEW TEMPLATE NEW.DOCX](#)
- CAB VOUCHERS

# EVIDENCE OF QUALITY

A 10-YEAR RETROSPECTIVE ANALYSIS OF OBSTETRIC OUTCOMES AT AN URBAN FAMILY MEDICINE RESIDENCY CLINIC REVEALED:

- ..\DATA ENTRY PROJECT\OBMH RESEARCH FORUM POSTER.PPTX
- LOWER PTD AND LBW IN A HIGH-RISK PATIENT POPULATION COMPARED TO MILWAUKEE COUNTY AS A WHOLE
- SLIGHTLY LOWER PTD AND LBW SINCE INITIATION OF OB-PCMh
- PATIENT COMPLIANCE WITH PRENATAL CARE SIGNIFICANTLY IMPROVED SINCE OB-PCMh
- 7% IMPROVEMENT (FROM 83% TO 90%) IN PP VISITS SINCE OB-PCMh

# NATIONAL AND LOCAL COMPARISONS

## 2010 PRETERM DELIVERY RATES- PRIOR TO OB-PCMH

Nationally	12 %
State of Wisconsin	10.8 %
Family Health Center	10 %

## 2019 PRETERM DELIVERY RATES

Nationally	10.2 %
State of Wisconsin	10.1 %
Family Health Center	6.1 %



# WHY IT WORKS

- EARLY IDENTIFICATION OF AND ACTION TO ADDRESS MODIFIABLE RISK FACTORS
- REGULAR MULTIDISCIPLINARY CHART REVIEWS TO ENSURE HIGH QUALITY PRENATAL CARE
- SYSTEM-WIDE EDUCATION (FOR PHYSICIANS AND STAFF) HIGHLIGHTING EMERGING MCH GUIDELINES
- ABILITY TO ATTEND COMMUNITY/STATE SEMINARS FOR UP-TO-DATE RESOURCES
- ALLOWS FOR FREQUENT INTERACTION WITH PROVIDER AND HMO IF NECESSARY

# REFERENCES

- CDC PRETERM BIRTH- UNITED STATES 2006 AND 2010
- STATE OF WISCONSIN DHS BIRTHS AND INFANT DEATHS 2010
- MARCH OF DIMES 2019 REPORT CARD