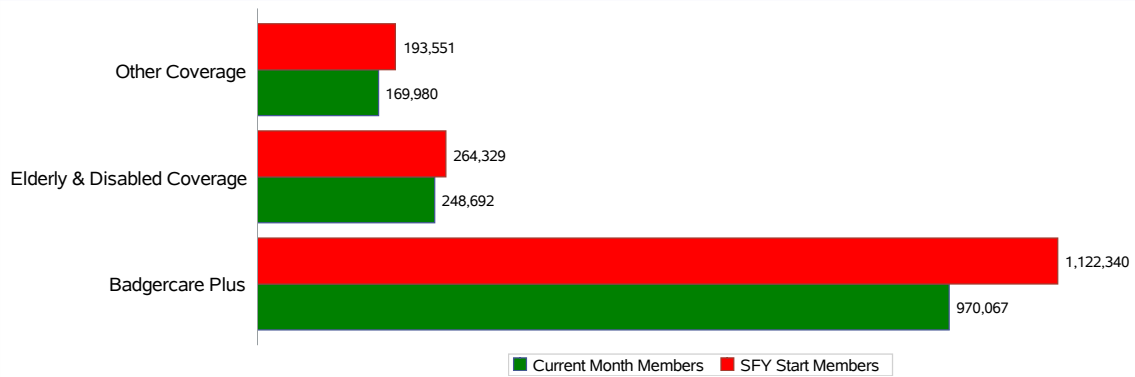


Current Month Health Care Enrollment At A Glance



Mar-24

Category	Current Month Members	% Change since Start of SFY	%Change from Last Month
Childless Adults	210,941	-26.5%	-5.1%
Children	353,008	-4.2%	4.7%
Express Enroll-Children	76	52.0%	10.1%
Express Enroll-PW	51	-12.1%	-5.6%
Income Extensions	256,363	-11.4%	-10.0%
Parents/Caretakers	127,320	-14.4%	-2.5%
Pregnant Women	21,541	-23.3%	-6.2%
Youths Exiting	767	-11.5%	-1.0%
Badgercare Plus	970,067	-13.6%	-2.9%
Institutionalized	9,582	-6.4%	-0.7%
Katie Beckett Program	9,508	6.4%	3.2%
MAPP	35,097	-3.9%	-3.8%
SSI	105,528	-6.0%	-0.9%
SSI-Related	46,375	-9.5%	-0.9%
Waiver	42,602	-5.6%	-0.1%
Elderly & Disabled Coverage	248,692	-5.9%	-1.0%
Family Planning Only Services	26,395	-23.1%	0.5%
Foster Care	14,961	-0.3%	0.7%
Medicare Beneficiaries	14,286	5.6%	5.5%
Miscellaneous	3,649	-33.0%	1.1%
SeniorCare	97,786	-13.0%	-2.7%
Subsidized Adoption	12,376	2.0%	0.5%
TB-Related	212	-8.2%	-4.5%
Well Woman MA	315	-34.0%	-8.2%
Other Coverage	169,980	-12.2%	-1.0%
** Grand Total	1,388,739	-12.1%	-2.3%

Note: HCTC program ended 12/31/2013. BadgerCare Plus Basic ended 03/31/2014.